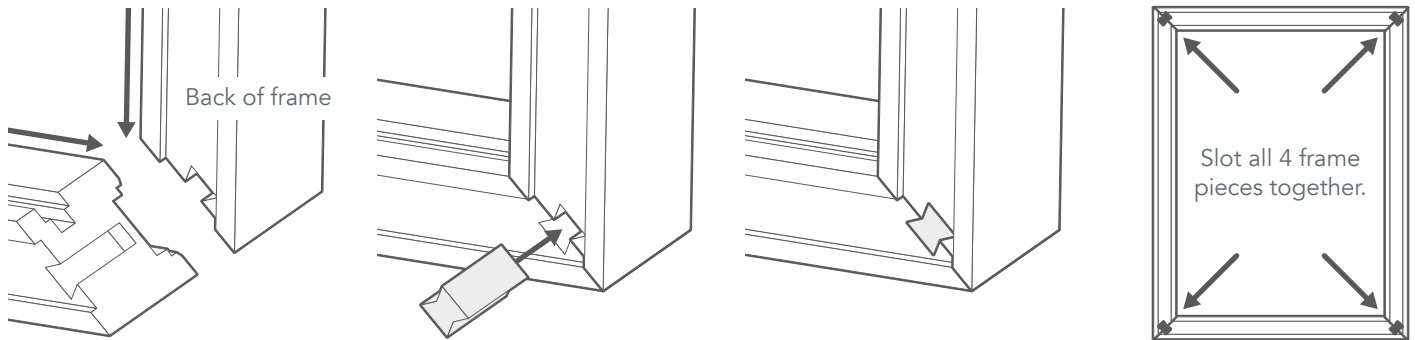
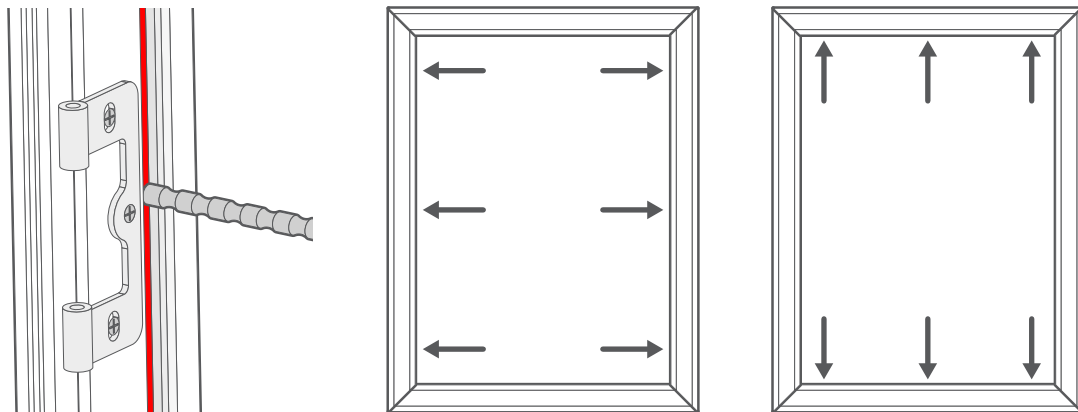


Assemble, level and install the frame

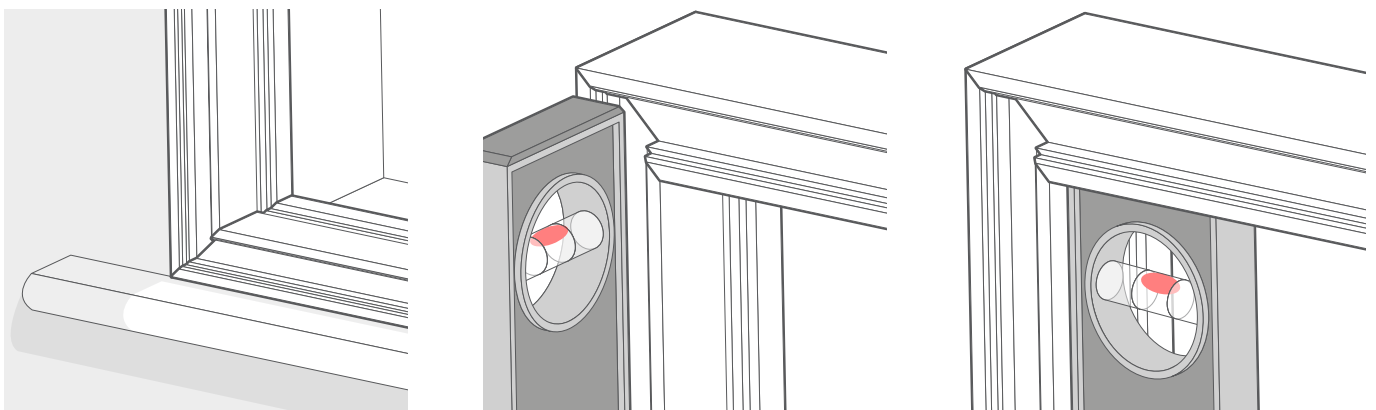
1



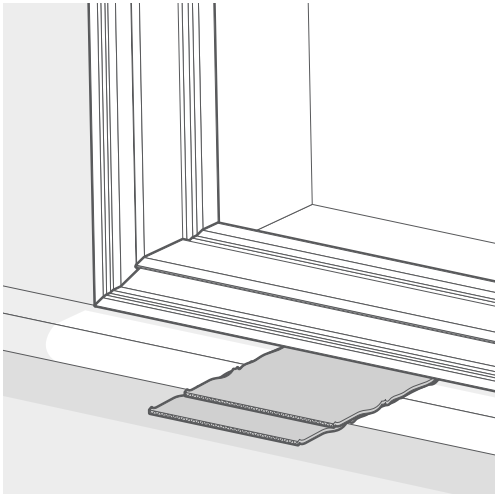
Start by slotting the frame pieces together, then secure them using the provided Hoffman keys.



Pre-drill fixing holes through all four frames. The holes should be drilled through the channels along the inside face of the frames. On the sides, there should be one hole level with each hinge and one in the centre. For the top and bottom, drill them a similar distance in from each end, and one in the middle again.



Slot the assembled frame into the window, using a spirit-level to make sure the frame is level. Check all four corners to ensure the frame isn't tipped or twisted at all.



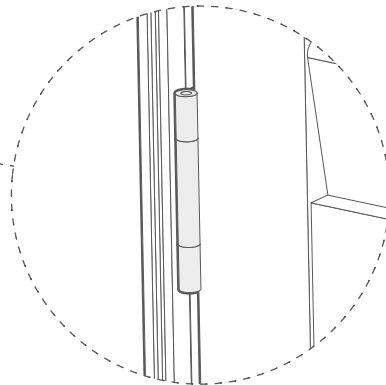
Once you're happy that the frame is level, pack the frame out to prevent any movement. The easiest way to do this is to use pieces of the box your Shutter arrived in, layered between the frame and the walls and sill.

Next, hang the panels, as this will allow you to straighten and align the frame accurately before screwing it into place.

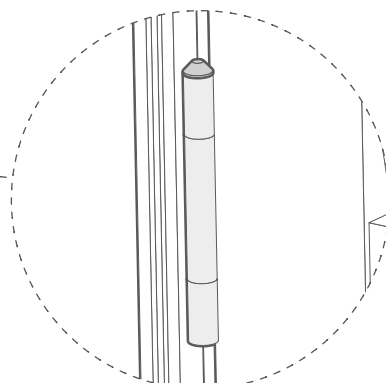
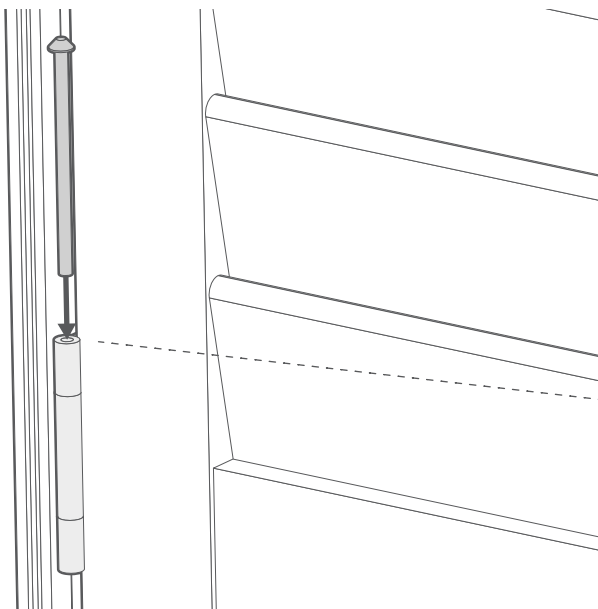


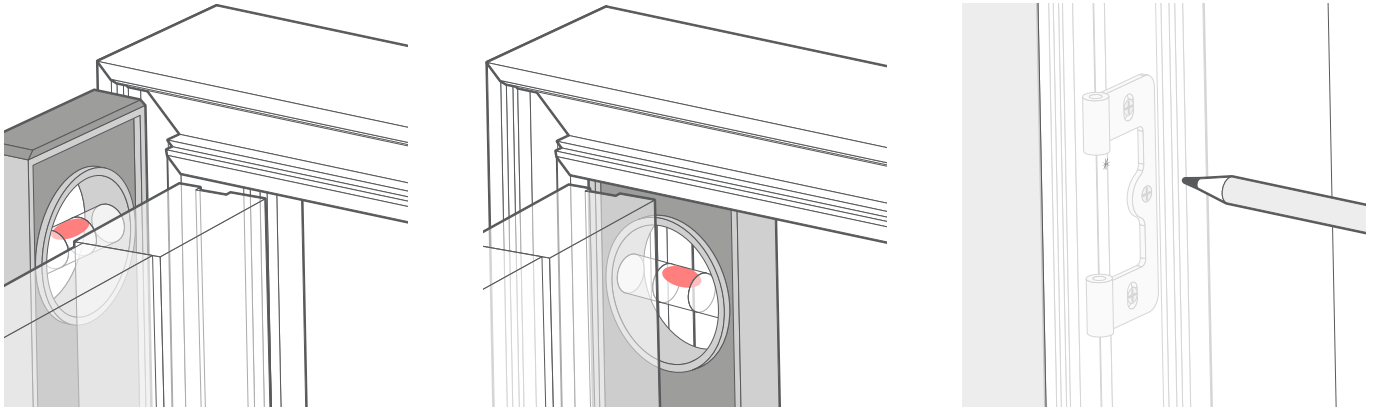
Line up the panels with the frames and slot the hinges on the panels, into the hinges on the frames.

If your shutter has folding panels, the panels will hinge together in the same way.

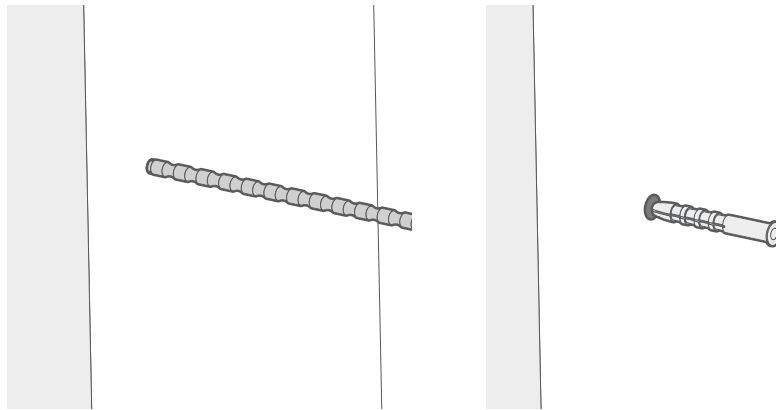


Lock the hinges together using the hinge pins. Slot each pin into the top of each hinge and push down until the pin is fully inserted.

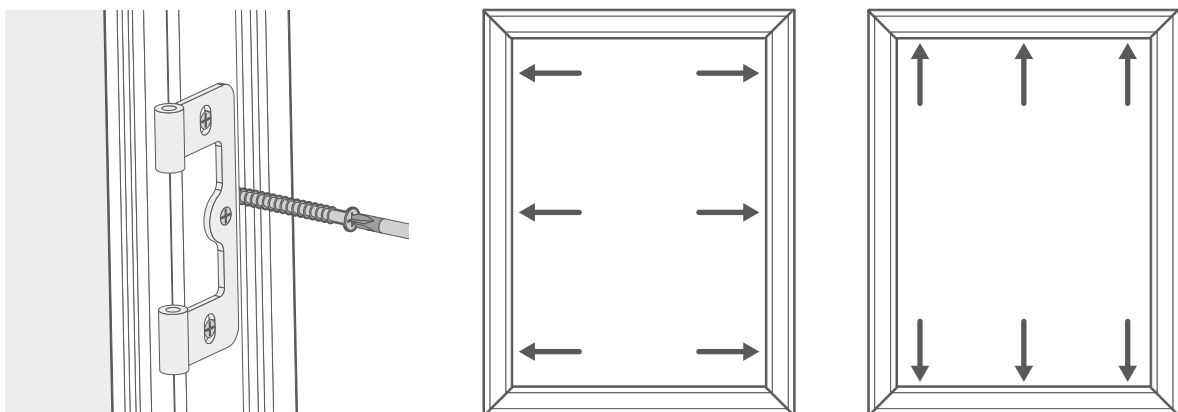




With the panels in place, take a moment to re-check that the frame is level in all corners. Pack the blind tighter into place if necessary, once level. Mark through the screw holes in the frame, onto the wall, with a pencil.



Remove the panels and frame from the window, then drill holes where you made your marks. Insert a Rawl plug into each hole.



Place the frame back into position in the window and screw into place using the long screws provided.

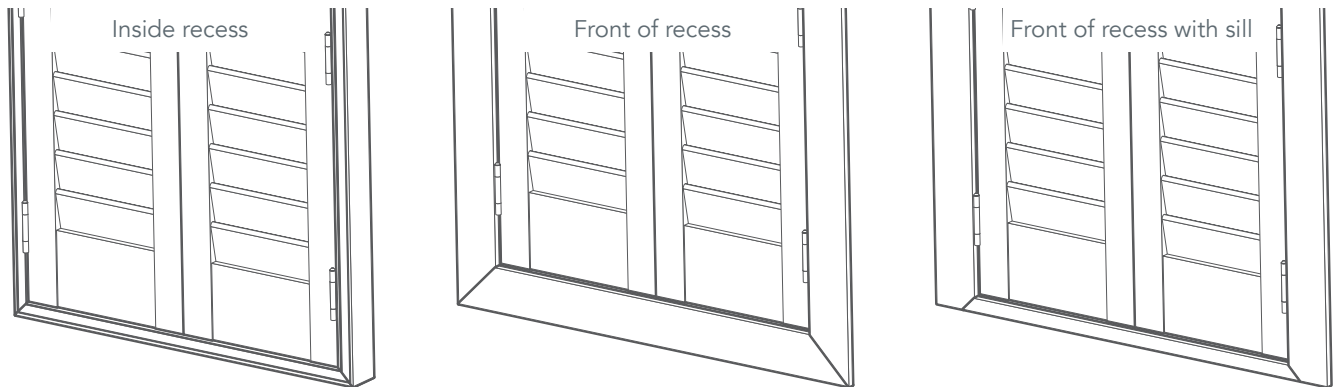
Top Tip

Insert the screws for the top part of the frame first, to help hold it steady while you insert the rest of the screws.

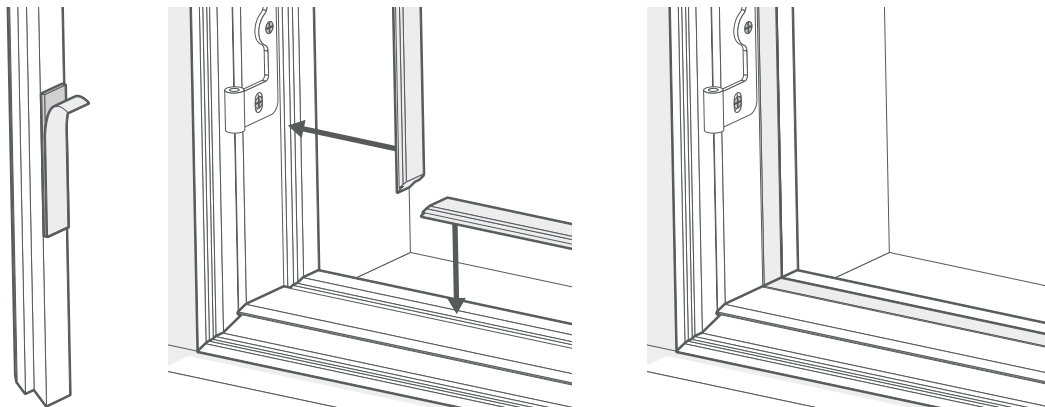
Install the trims

2

Trims are provided to fill or cover the channels in the frame pieces and neaten the shutter's appearance when fitted. The inner trim is the same design and fitting method for all fitting types.

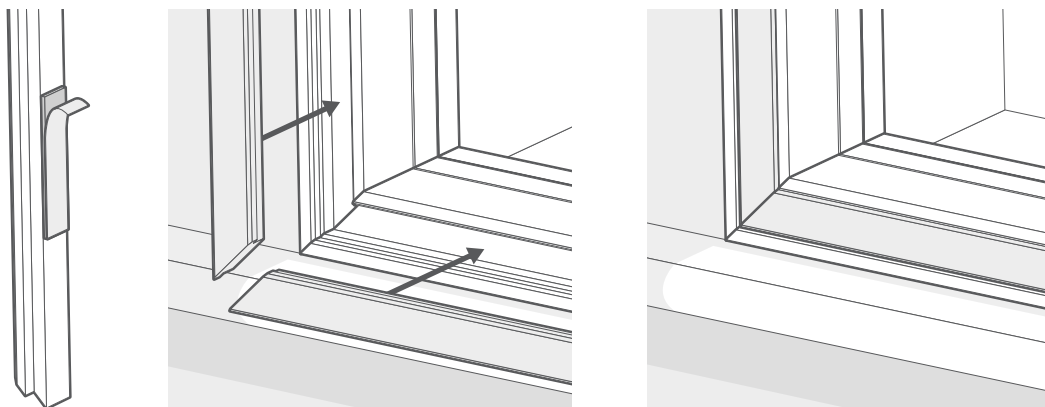


Inner trim - all fitting types



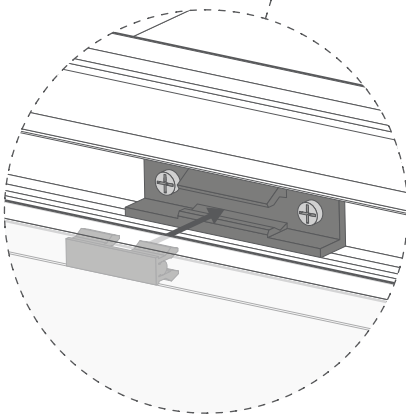
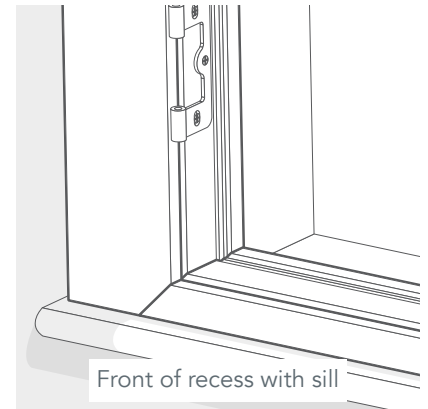
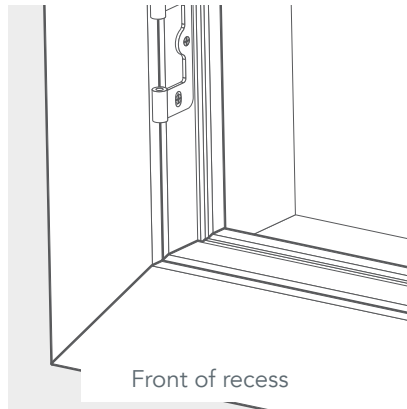
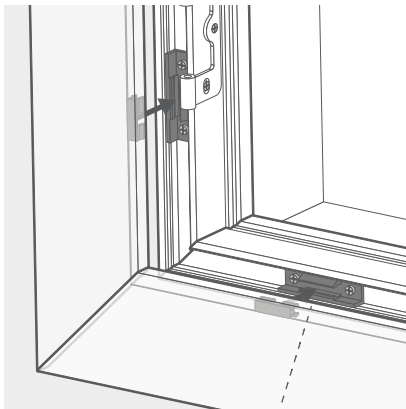
Start with the inner frame trim. Peel the covers off the sticky pads on the back of the trim pieces. Slot the trims into the channels through which you inserted your screws. This will cover the screws.

Outer trim - inside recess fitting



Peel the covers off the sticky pads on the back of the trim pieces. Slot the outer trim into the channels on the front face of the frames.

Outer trim - front of recess fitting



For front of recess (and front of recess with sill) fitting, a wider trim is supplied that is designed to overlap onto the wall around the recess.

Line up the clips on the back of the trim pieces with their corresponding mounts on the inside of the front channel on each frame piece. Push the trim pieces firmly against the frame until their clips snap into place.

If your window has a sill and you chose front of recess with sill fitting, the bottom part of the bottom and side trims have been machined off so that they sit neatly on the sill.

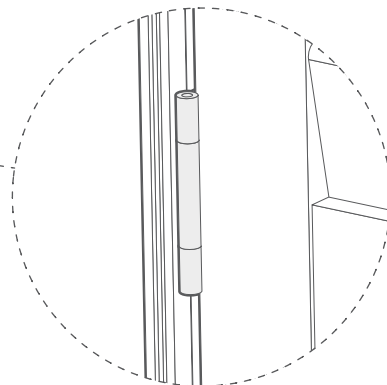
Re-install the panels

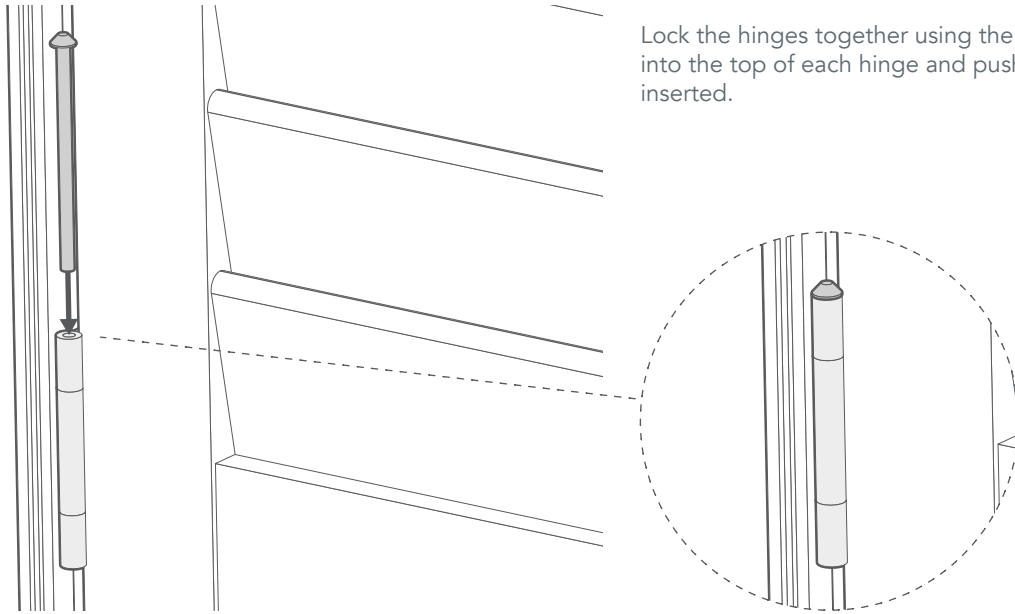
3



Line up the panels with the frames and slot the hinges on the panels, into the hinges on the frames.

If your shutter has folding panels, the panels will hinge together in the same way.





Lock the hinges together using the hinge pins. Slot each pin into the top of each hinge and push down until the pin is fully inserted.