

Measuring for your new blinds is easier than you might think! All you have to do is follow our simple tips, double-check everything you do, and set aside some time to do it. Happy measuring!

This guide works for:

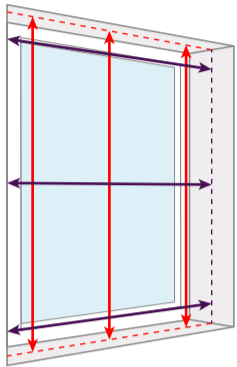
Standard Vertical blinds
Rigid Vertical blinds

Standard Windows

If your windows are fairly standard, in that they aren't an unusual shape and are recessed into the wall, then you can measure either **inside the recess (recess fitting)**, or **outside of it (exact fitting)**.

Recess fitting

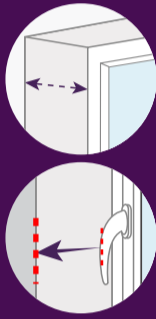
Measure the full width and height of the recess [the size of the hole if you like] and we will make the appropriate deductions to ensure a perfect fit.



- **Measure in 3 places** for both the width and the drop, **use the smallest measurement**
- **Don't make any deductions**, we'll deduct 10mm from the width and 15mm from the drop to ensure your blind fits perfectly
- **Use a metal tape measure**, cloth ones can stretch and give you inaccurate measurements

Top-Tip:

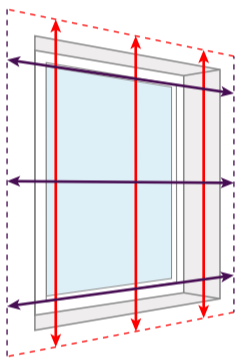
Check that your recess is deep enough to fit the blind into, also bearing in mind any obstructions such as handles.



Depth Needed for Vertical Blinds
75mm

Exact fitting

Measure the full width and height of the recess [the size of the hole if you like] and add a little extra to the top and to each side, we will make the blind to the size you specify with no deductions.



- To minimize light leakage **we recommend that the blind overlaps the window recess by at least 70mm at the top and 50mm each side**
- The overlap at the bottom of the blind is a matter of personal choice but please **take into account obstacles** such as radiators

Top-Tip:

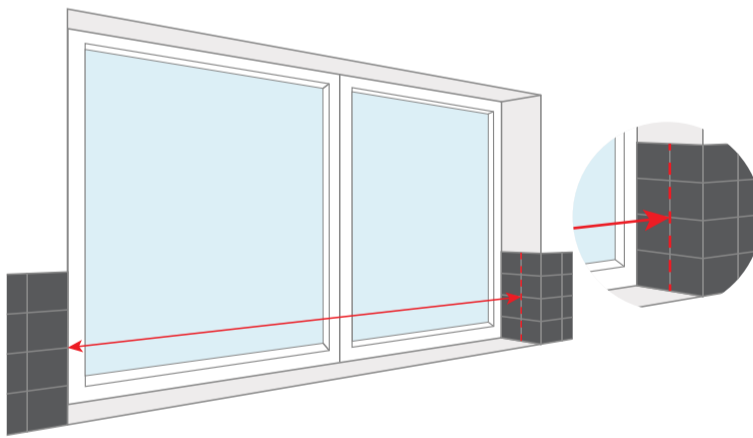
If you are **replacing an existing blind** with one of the same size, simply measure the blind (including its fittings) and specify exact fitting, we will make you one the same size.



Other Windows

Part-tiled recesses

If you have tiles part-way up your recess (often the case in kitchens and bathrooms) then the space between them is most likely to be the narrowest point in the recess.



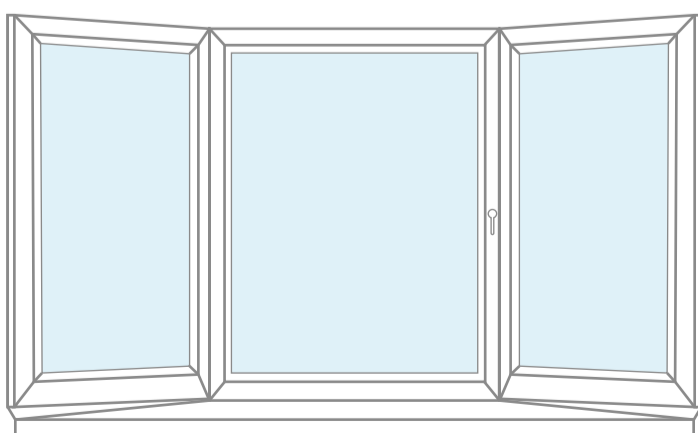
Measure between the tiles to ensure your blind will fit.

Top-Tip:

Do the same if you have a picture rail, skirting board or other items on the inside of the recess.

Bay windows, half-bays & L-shaped windows

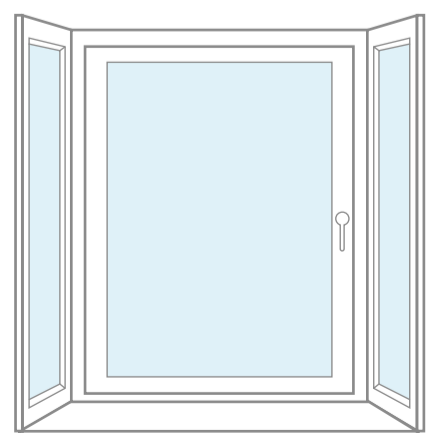
We have some handy guides already put together especially for vertical blinds in bay windows, click on the links below to take a look!



Angled bay windows

[Click here](#) for our handy guide

You can use this same guide for angled half-bay windows, it's the same principle



Square bay windows

[Click here](#) for our handy guide

You can use this same guide for L-shaped windows