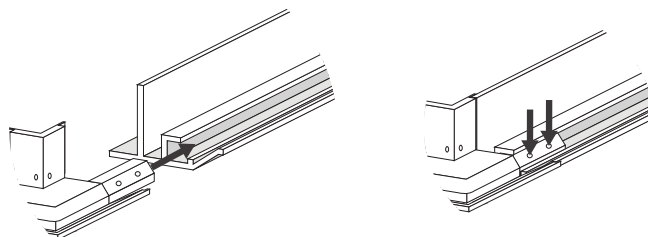
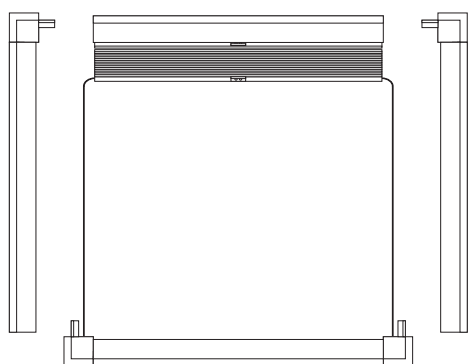


1

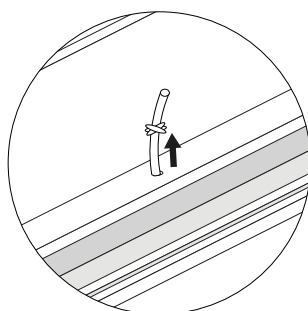
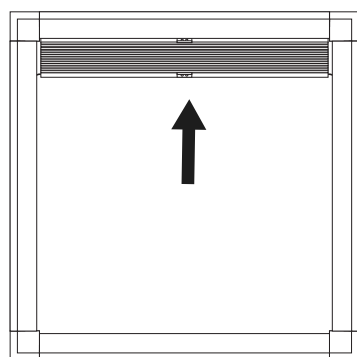
Assembling the frame



Unpack the blind and frame and lay out all of the parts to ensure none of the cords are tangled. Insert the locating pegs on each corner section into the corresponding slot on the aluminium frame and tighten the two screws to secure the frame together. Repeat this for each corner.

2

Test the tension



Stand the assembled blind upright and raise it fully to the top. If the blind starts to lower slightly of its own accord, the tension will need a small adjustment.

On the top of the frame the two guide cords are tied off with a knot, pull the cord through by 5mm and tie another knot to hold it in place. Do this on both of the guide cords to increase the tension.

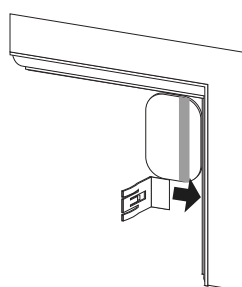
Retest the blind and make further small adjustments if required.

3

Install the brackets

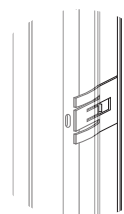
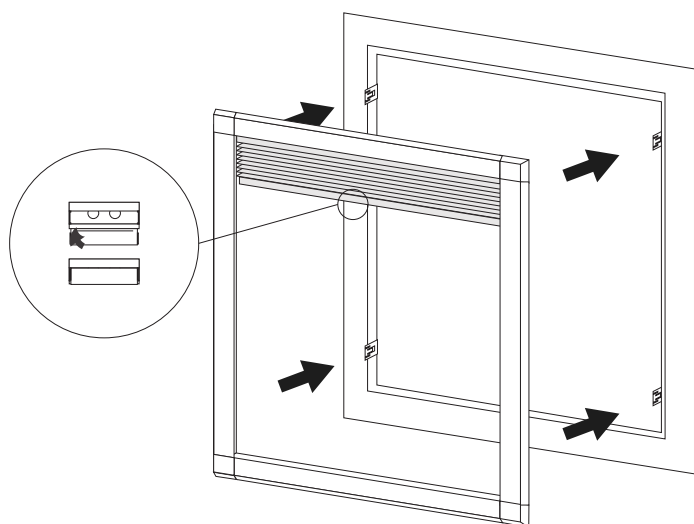
Place a credit card or store card vertically in the corner of the glass on your window. The bracket will sit in line with the bottom of the card.

Push the bracket firmly into place between the glass and seal.



4

Fit the blind onto the brackets



Line the assembled blind up with the brackets so that the centre prong of the bracket is aligned with the oval slot on the frame. Ensure that the frame is sitting on the inside edge of each of the brackets (between the bracket and the glass).

Push the frame towards the window until the oval slots lock onto the prongs of each of the brackets.

Finally, flip the screw cover on the handles over to clip into place.

The installation of the blind is now complete.