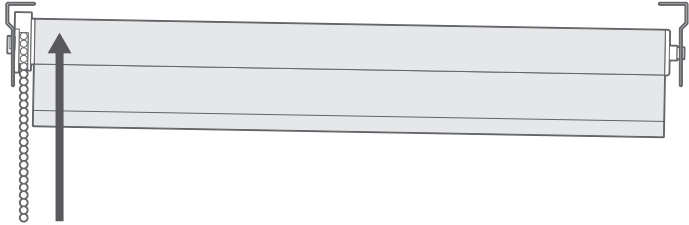


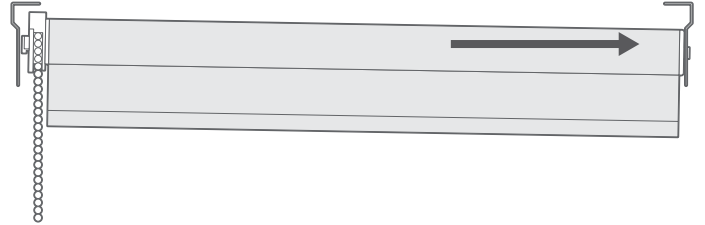
Remove the blind from the brackets

1

Push the control end of the blind up to disengage the locking peg on the end of the mechanism.

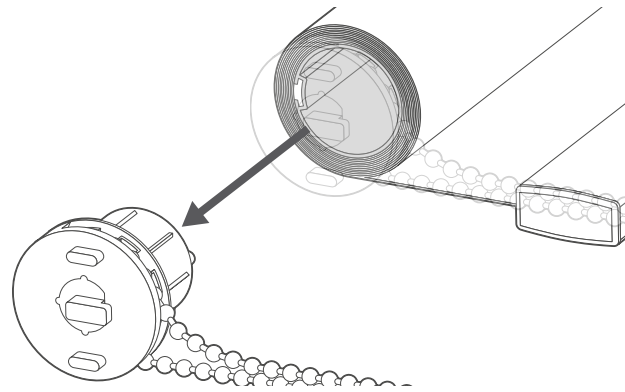


Then, push the blind toward the opposite end to release the control end from its bracket entirely.

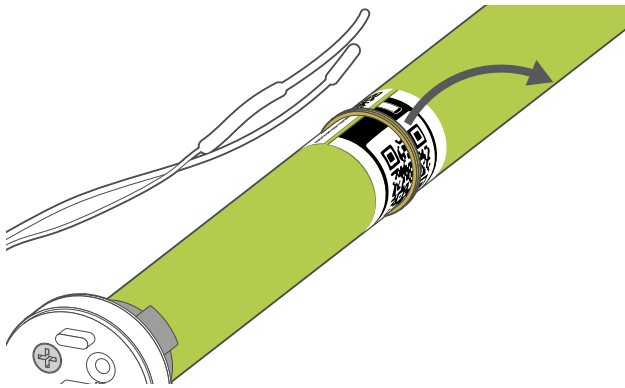


Fit the motor

2



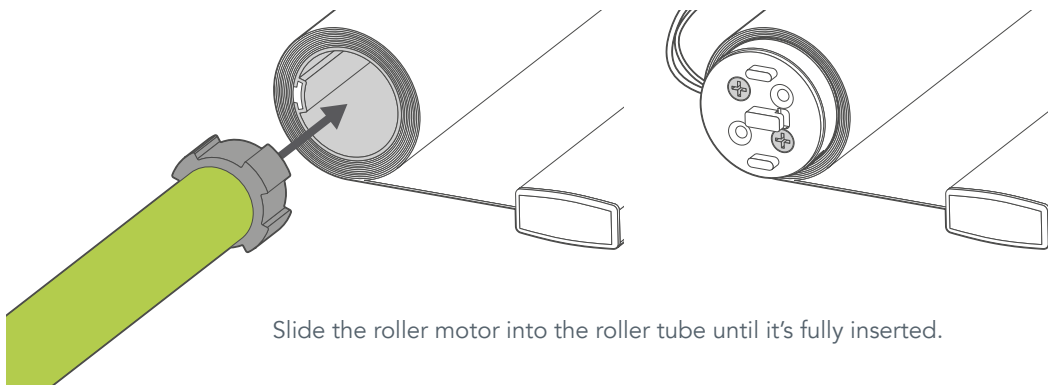
Lay the blind down and gently pull the sidewinder mechanism out of the roller tube. You won't need this mechanism after you've installed the motor, but we'd recommend keeping it safe somewhere for future use, just in case.



Unpack the roller motor - you'll find a label containing a QR code secured to the motor with an elastic band. Remove the label and set it aside for later.

Top-Tip:

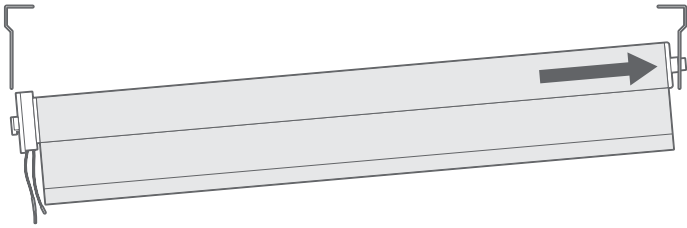
If you are fitting multiple motors, **keep the label from each motor with the blind you're fitting the motor into.** The QR code on the label is unique to the motor, so you'll want to keep track of which is which.



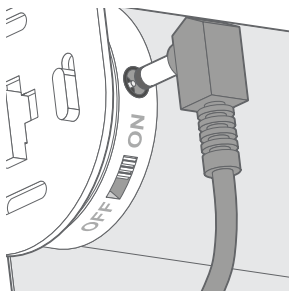
Slide the roller motor into the roller tube until it's fully inserted.

Reinstall the blind and charge the motor

3



Locate the depression end (the opposite end to the controls) of the blind into the circular hole in the corresponding bracket. Lift the control end of the blind and slot the locking pegs into the corresponding slots on the bracket.



Once your blind is installed we recommend plugging in the motor to allow it to fully charge before use.

Plug the charging cable (included) into the motor charging port and allow to charge until the LED on the charger plug turns green.

Download the SmartView App

4

Download the SmartView app to your mobile device and you'll be setting up your blinds in no time!

Desktop users scan the QR code with your phone



GET IT ON
Google Play

Download on the
App Store

Mobile users tap one of these links

When it comes to adding your blind to the app it's simple, just scan the QR code on the label that you removed from the motor in step 2 of this guide.