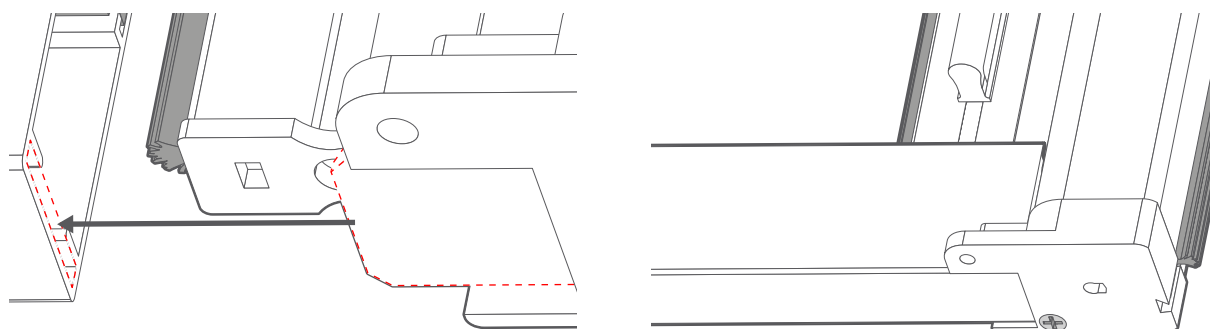
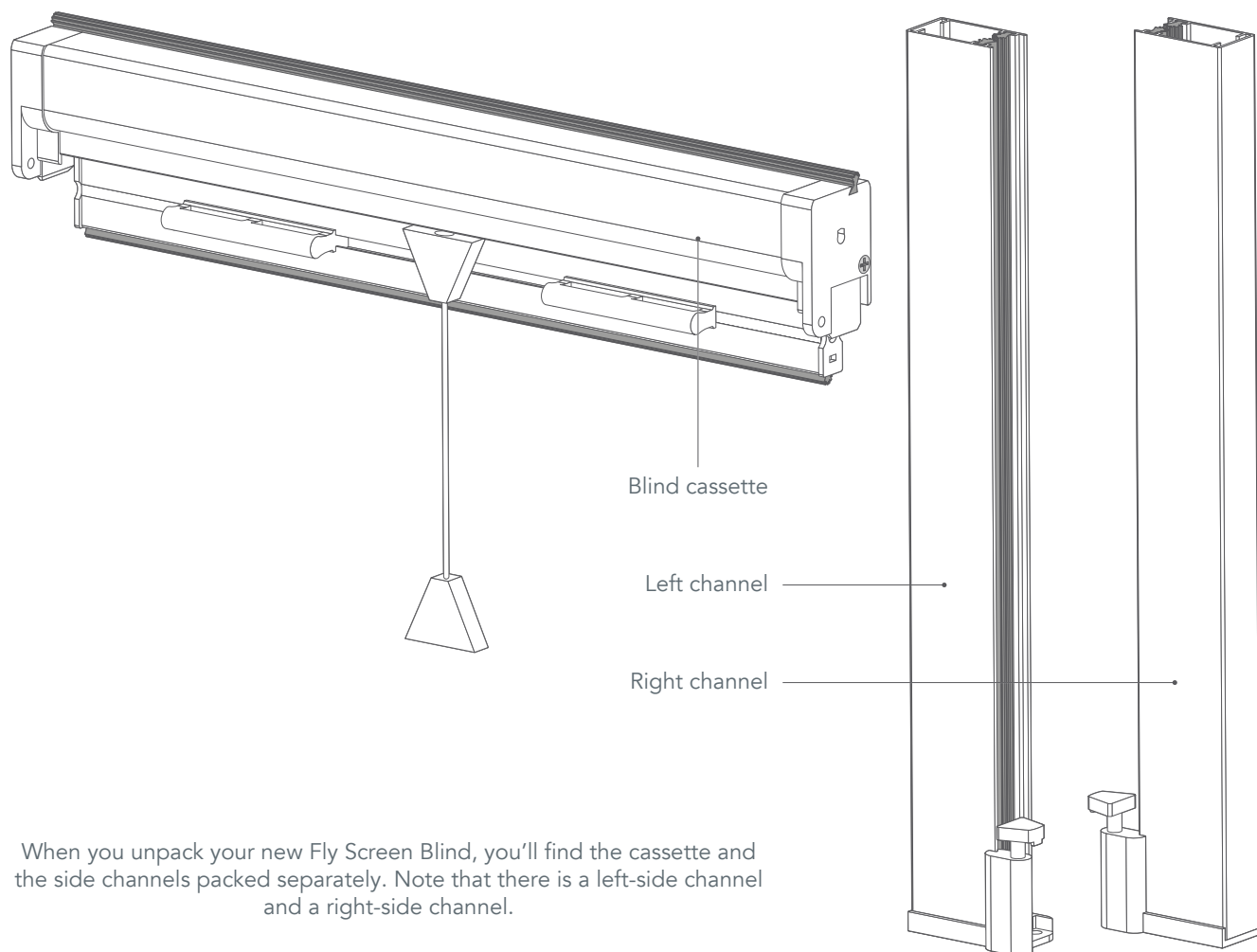


Assemble the blind

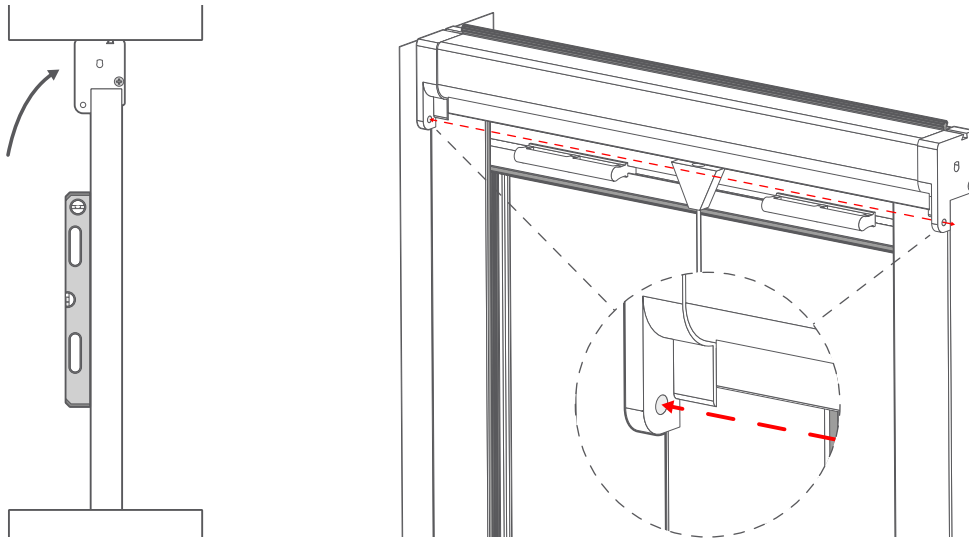
1



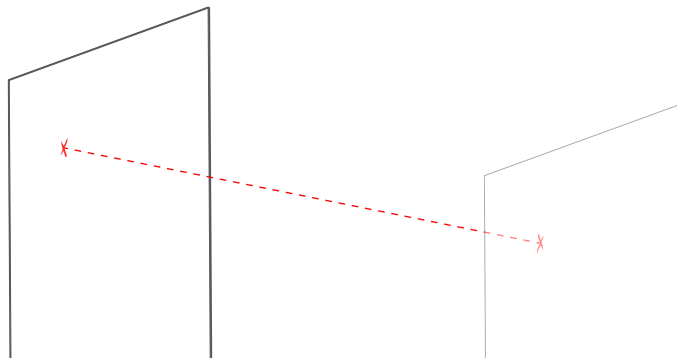
Lay the blind face up and slot the side frames onto the ends of the cassette - there is a slot at the top of the frame you can use to line it up correctly with the end of the cassette.

Install the blind

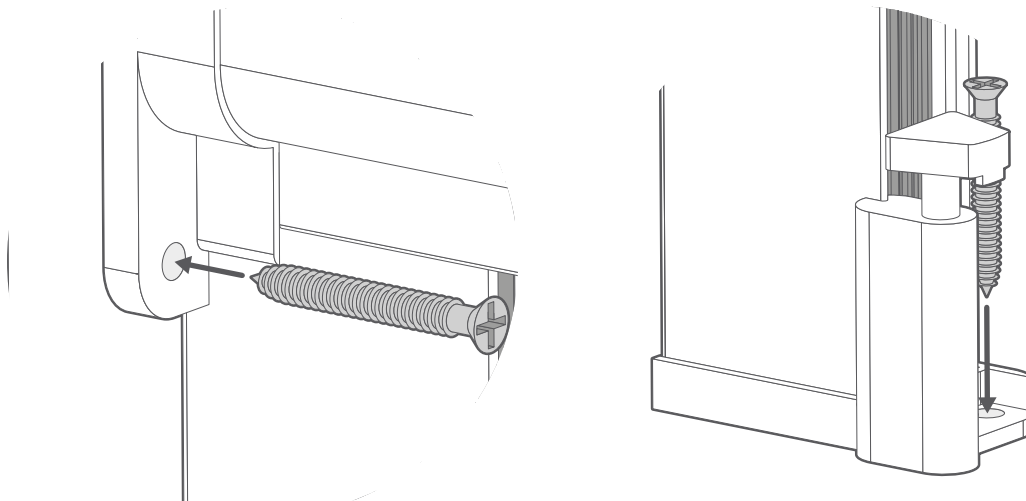
2



Place the screen in position in the recess, using a spirit level to make sure it's straight. At either end of the blind's cassette, you'll see a fixing hole - mark through the hole onto the wall on both sides with a pencil.



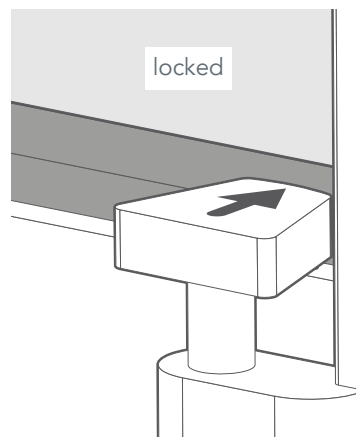
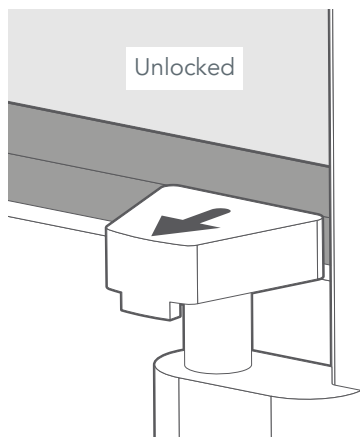
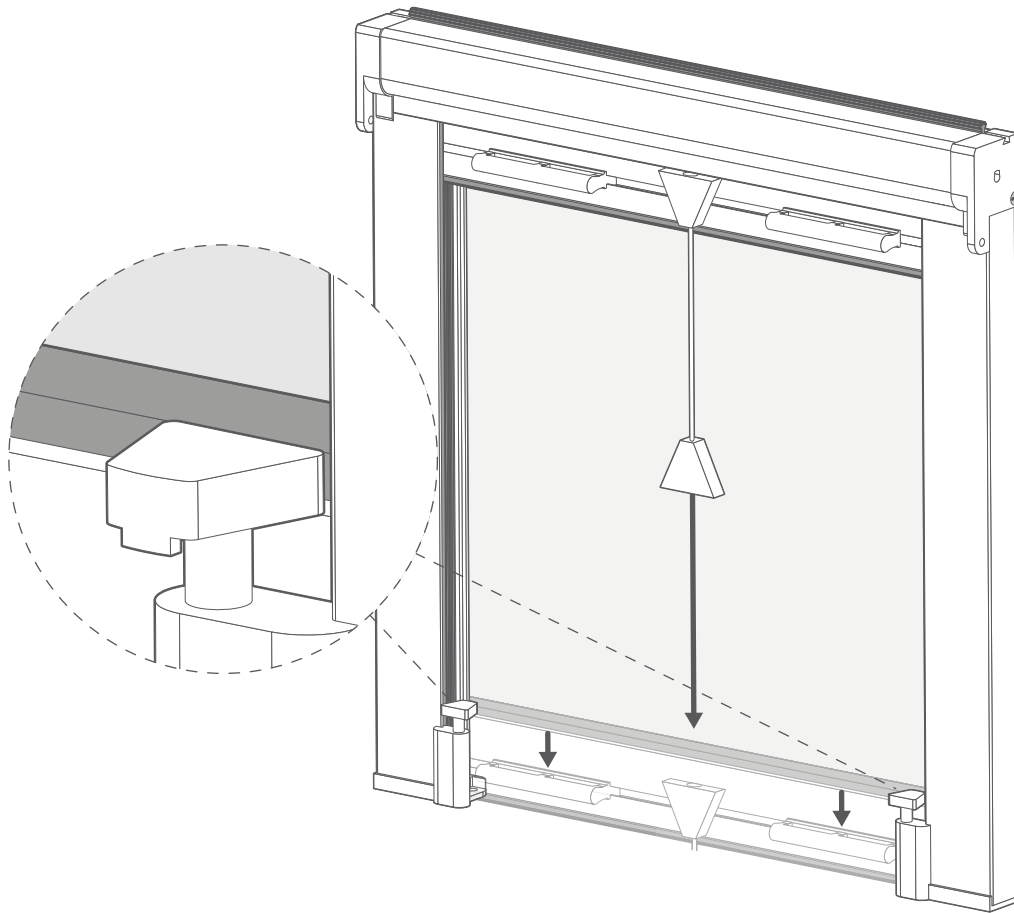
Take the blind back down and drill a hole into the wall at each side of the recess. Insert a wall plug into each hole.



Lift the blind back into position. Use one screw at each side to secure the cassette in place. Secure the side channels directly to the sill using one screw for each channel.

Installing and operating the blind

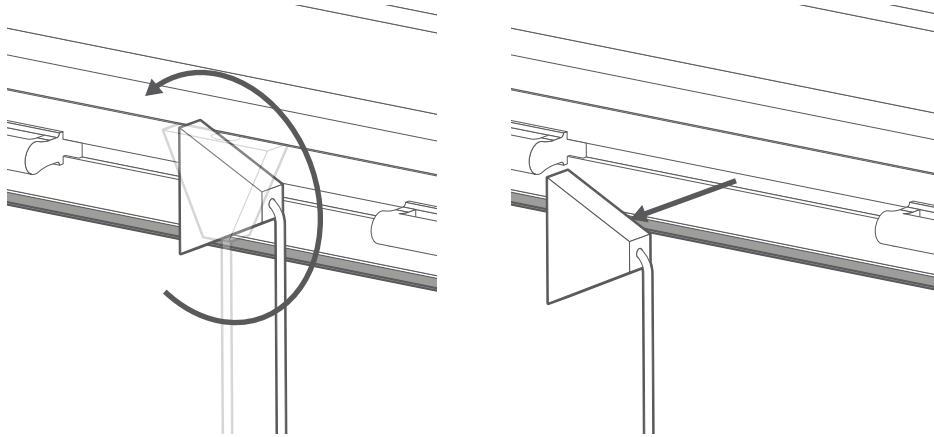
3



The blind uses a spring-loaded mechanism to automatically raise when unlocked. To lock it in its lowered position, pull the cord to bring it down, then hold it down at the bottom with the two tab handles and use the locking hooks on the bottoms of the side channels to fasten it in place.

Top-Tip

Always make sure that the locking hooks are fully engaged and the blind locked in position when lowered, to prevent the blind retracting unexpectedly.



If you'd prefer not to have the pull cord on the front of the blind, this can be easily removed. Simply twist the cord mount on the front of the bottom bar in either direction then pull it out of the bar. Now the bar can simply be raised and lowered using the two handles.