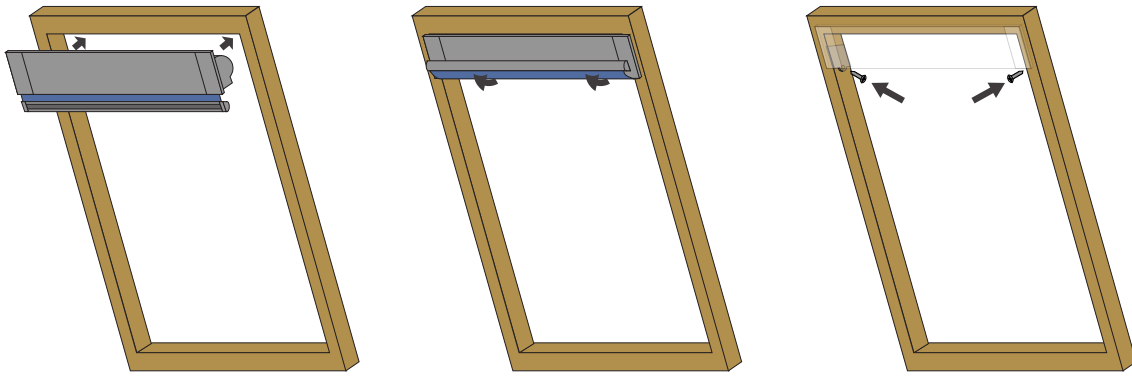


1

Fitting the cartridge



Step 1: Slot the cartridge into place at the top of the window.

Step 2: Move the bar at the bottom of the fabric out of the way so you have clear access to the holes for the screws.

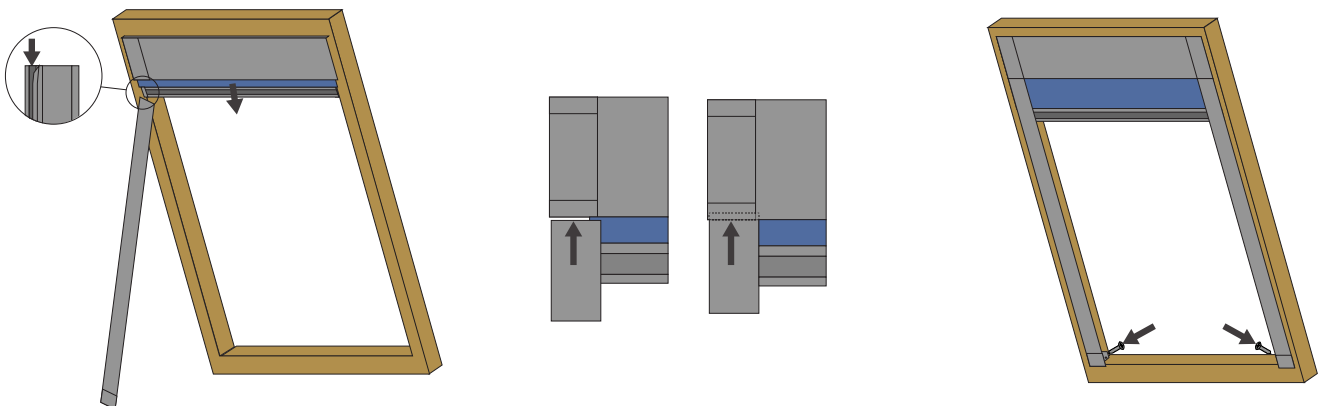
Step 3: Use one screw on each side to fix the cartridge in place.

(Take care not to over tighten the screws, as long as they touch the plastic, it's enough to hold the blind securely)

Top Tip: If you are using ladders to access the window, you can put the screws into the holes on the cartridge (just give them one turn with your screwdriver and they'll hold in place) before step 1, that way you will have less to carry up to the window.

2

Fitting the side channels



Step 1: Make sure that the handle is sitting centrally on the fabric, if it has moved then simply slide it sideways back into position (so an equal amount of fabric shows on both sides of the handle) Pull the blind down just far enough to be able to slide the fabric into the channel. The end of the channel has been angled outwards to allow the fabric to feed neatly into place.

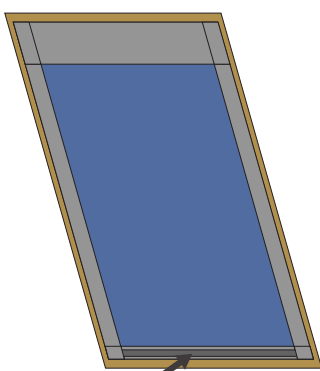
Step 2: Slot the channel into place just under the cartridge fascia (there is a small tab to guide the channel into place, the front of the channel should sit between the fascia and this tab)

Step 3: Use the remaining two screws to secure the channels into place. Remember not to over tighten them.

Top Tip: Slotting the channels into place is really simple, just concentrate on feeding the fabric into the channel and the rest of the components will automatically fall into place.

3

Operating the blind



To lower your blind, pull the handle downwards. The blind will hold at any position.

To raise your blind, gently push the handle back towards the glass and keep the handle in this position, this will release the lock and the blind will rise. Let go of the handle and the blind will stop rising.